



Fire  
Farm

BELLE 10



IC COLLECTION  
05100

BELLE 72



BELLE 36



SCOTT 18



OTTO





The **IC collection** is a series of fixtures designed to complement the original, award winning 72" Belle pendant. All are spun from 16-gauge steel with various hand-applied finishes available for the interior and exterior. You can choose a blackened steel exterior with a metallic leaf interior for an industrial chic aesthetic or a single color, powder coat paint finish for a more minimal modernist touch.

The pendants are available in 72", 36", and 10" diameters and can be grouped and suspended to fit larger environments, or used individually to light more intimate spaces. The IC collection is Fire Farm's largest collection of lighting and furnishings to date. Companion pieces to the pendants include seating, wall sconces, and accessory items.

#### 72-in. pendant

##### Item 05100.14X

**Mounting Option**  
Requires support independent of junction box

**Lamping Option**  
6 x 26w Max E26, medium base socket 120vac

**Bulb**  
Dimming LED bulbs included

**Dimming**  
Determined by compatible bulb selection and dimming control system

**Dimensions (H x W x L)**  
16 x 72 x 72 (in)  
41 x 183 x 183 (cm)

**Weight**  
Approx. 100 lbs.

**Suspension Length**  
Adjustable 10 ft cord and cables

**CA Title 24**  
By request

**Certification**  


#### Finish Options

Item Number	Exterior/Interior
05100.141	blackened steel/gold leaf
05100.142	blackened steel/silver leaf
05100.143	blackened steel/copper leaf
05100.144	deep bronze powder coat
05100.145	custom paint: contact factory

#### 36-in. pendant

##### Item 05100.13X

**Mounting Option**  
Standard junction box mounting

**Lamping Option**  
4 x 26w Max E26, medium base socket 120vac

**Bulb**  
Dimming LED bulbs included

**Dimming**  
Determined by compatible bulb selection and dimming control system

**Dimensions (H x W x L)**  
8 x 36 x 36 (in)  
21 x 92 x 92 (cm)

**Weight**  
30 lbs.

**Suspension Length**  
Adjustable 10 ft cord and cables

**CA Title 24**  
By request

**Certification**  


#### Finish Options

Item Number	Exterior/Interior
05100.131	blackened steel/gold leaf
05100.132	blackened steel/silver leaf
05100.133	blackened steel/copper leaf
05100.134	deep bronze powder coat
05100.135	custom paint: contact factory

#### 10-in. pendant

##### Item 05100.13X

**Mounting Option**  
Standard junction box mounting

**Lamping Option**  
1 x 26w Max E26, medium base socket 120vac

**Bulb**  
Dimming LED bulb included

**Dimming**  
Determined by compatible bulb selection and dimming control system

**Dimensions (H x W x L)**  
12 x 10 x 10 (in)  
31 x 25 x 25 (cm)

**Weight**  
5 lbs.

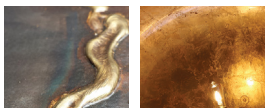
**Suspension Length**  
Adjustable 10 ft cord and cables

**CA Title 24**  
By request

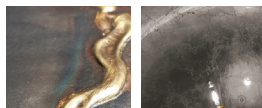
**Certification**  


#### Finish Options

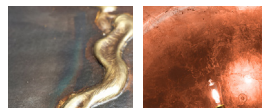
Item Number	Exterior/Interior
05100.121	blackened steel/gold leaf
05100.122	blackened steel/silver leaf
05100.123	blackened steel/copper leaf
05100.124	deep bronze powder coat
05100.125	custom paint: contact factory



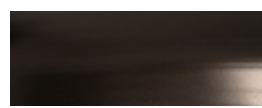
**Coating:** Matte clear powder paint  
**Exterior:** Blackened steel with bronze brazing  
**Interior:** Metallic gold leaf



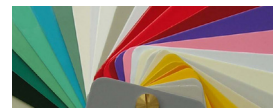
**Coating:** Matte clear powder paint  
**Exterior:** Blackened steel with bronze brazing  
**Interior:** Metallic silver leaf



**Coating:** Matte clear powder paint  
**Exterior:** Blackened steel with bronze brazing  
**Interior:** Metallic copper leaf

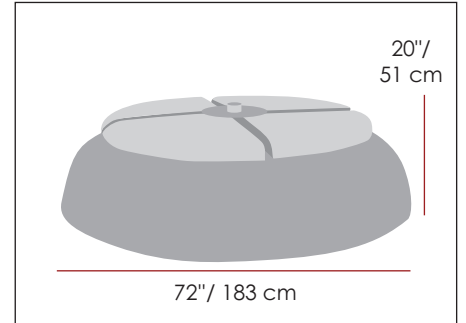


Deep bronze powder coat paint



Custom powder coat paint





**The IC collection** is a series of fixtures designed to complement the original, award winning 72" Belle pendant. The 72" diameter ottoman, Otto, is a heavy gauge spun steel base supporting an upholstered cushion and table top fitted with a multi-USB charging station for today's active lounge. Pair Otto with the 72" Belle fixture to create a zone rich with warm light and sound amplifying qualities perfect for conversation, intimacy and peacefulness in otherwise busy environments.

You can choose an exterior of blackened steel with bronze brazing details finished with a matte clear powder coat paint for an industrial chic aesthetic or a single powder coated paint finish for a more minimalist modernist touch.

The IC collection companion pieces include pendant fixtures, wall sconces, and accessory items.

#### Finish Options

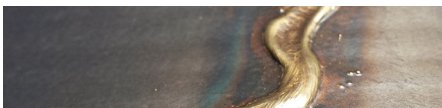
Item Number	Exterior
05100.941	blackened steel w/matte clear powder coat paint
05100.944	deep bronze powder coat paint
05100.945	custom powder coat paint

#### Dimensions (H x W x L)

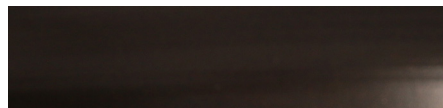
20 x 72 x 72 (in)  
51 x 183 x 183 (cm)

#### Weight

Approx. 120 lbs



Blackened steel w/matte clear  
powder coat paint



Deep bronze powder coat paint

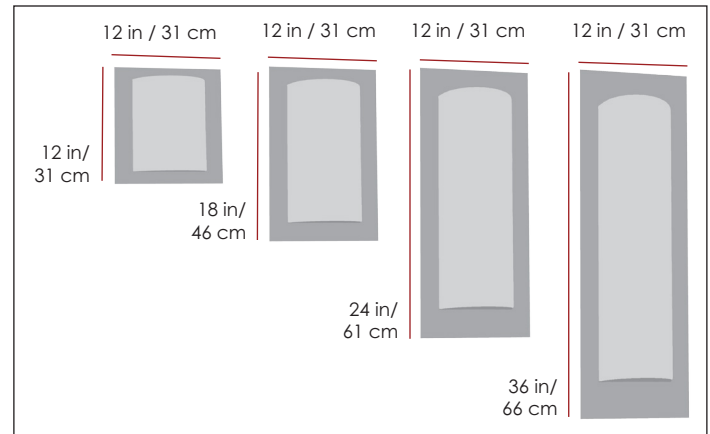


Custom powder coat paint



The **IC collection** is a series of fixtures designed to complement the original, award winning 72" Belle pendant. The Scott sconces are made from heavy gauge steel with various hand-applied finishes. You can choose a blackened steel exterior (with bronze brazed details and matte clear powder coat paint) for an industrial chic aesthetic or a powder coated paint finish for a more minimal modernist touch.

The sconces meet ADA extension requirements. The IC collection is Fire Farm's largest collection of lighting and furnishings to date. Companion pieces to the sconces include pendant fixtures, seating, and accessories.



#### Small scone

Item 05100.21X

##### Mounting Option

Standard junction box wall mounting

##### Lamping Option

1 x 26w Max E26, medium base socket 120vac

##### Bulb

Dimming LED bulb included

##### Dimming

Determined by compatible bulb selection and dimming control system

##### Dimensions (H x W x D)

12 x 12 x 4 (in)  
31 x 31 x 11 (cm)

##### CA Title 24

By Request

##### Certifications

ADA 

##### Finish Options

##### Item Number

05100.211	blackened steel w/matte clear powder coat
05100.214	deep bronze powder coat paint
05100.215	custom paint: contact factory

#### Medium scone

Item 05100.22X

##### Mounting Option

Standard junction box wall mounting

##### Lamping Option

2 x 26w Max E26, medium base socket 120vac

##### Bulb

Dimming LED bulb included

##### Dimming

Determined by compatible bulb selection and dimming control system

##### Dimensions (H x W x D)

12 x 18 x 4 (in)  
31 x 46 x 11 (cm)

##### CA Title 24

By request

##### Certifications

ADA 

##### Finish Options

##### Item Number

05100.221	blackened steel w/matte clear powder coat
05100.224	deep bronze powder coat paint
05100.225	custom paint: contact factory

#### Large scone

Item 05100.23X

##### Mounting Option

Standard junction box wall mounting

##### Lamping Option

2 x 26w Max E26, medium base socket 120vac

##### Bulb

Dimming LED bulb included

##### Dimming

Determined by compatible bulb selection and dimming control system

##### Dimensions (H x W x D)

12 x 24 x 4 (in)  
31 x 61 x 11 (cm)

##### CA Title 24

By request

##### Certifications

ADA 

##### Finish Options

##### Item Number

05100.231	blackened steel w/matte clear powder coat
05100.234	deep bronze powder coat paint
05100.235	custom paint: contact factory

#### Extra Large scone

Item 05100.24X

##### Mounting Option

Standard junction box wall mounting

##### Lamping Option

2 x 26w Max E26, medium base socket 120vac

##### Bulb

Dimming LED bulb included

##### Dimming

Determined by compatible bulb selection and dimming control system

##### Dimensions (H x W x D)

12 x 36 x 4 (in)  
31 x 92 x 11 (cm)

##### CA Title 24

By request

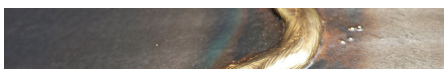
##### Certifications

ADA 

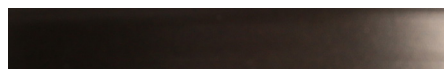
##### Finish Options

##### Item Number

05100.241	blackened steel w/matte clear powder coat
05100.244	deep bronze powder coat paint
05100.245	custom paint: contact factory



Blackened steel w/bronze brazing,  
matte clear powder coat



Deep bronze powder coat paint



Custom powder coat paint